

# Butler Express Mezz<sup>TM</sup> System

**Rise Above the Rest. Fast.**



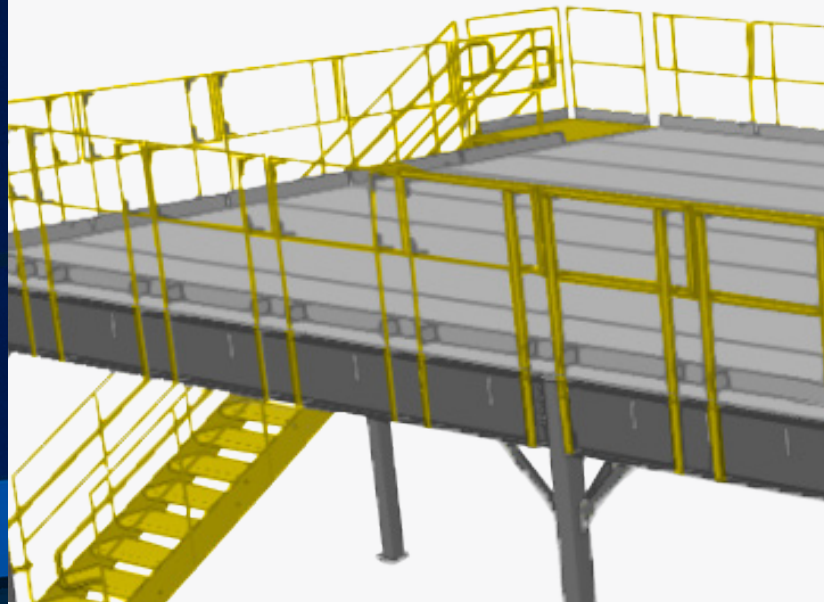


# RISE ABOVE THE REST. FAST.

The Butler Express Mezz™ System is the fastest, easiest way to get a mezzanine ever. Whether you need light loads for office space or heavy loads for storage, the Express Mezz System meets your needs.

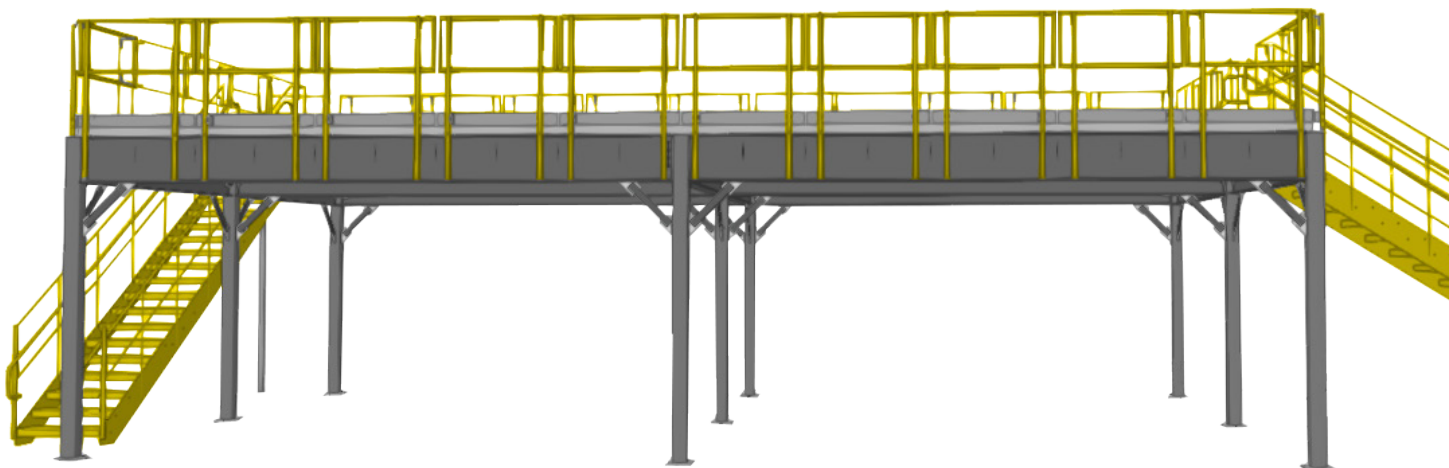
## FREESTANDING AND FLEXIBLE

Save time by combining a mezzanine with a new Butler building project. Because it's freestanding, you can choose to add a mezzanine to an existing structure.



## Mezzanine Structure

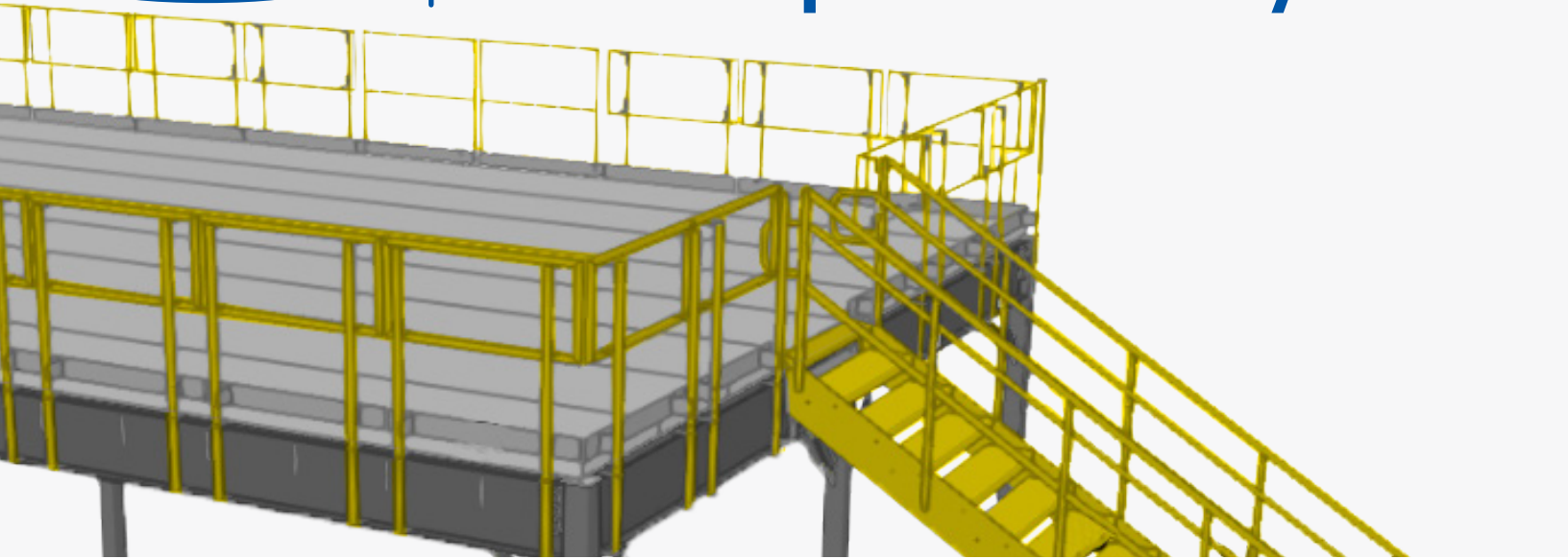
- Butler 3-plate Beams
- G30, 11.5" deep C-joists attached with bolted clips
- HSS Square tube columns
- No welding required for all Express Mezz parts, including railing and stairs, which bolt to factory punched holes in perimeter beams



\*Please note – The Butler Express Mezz System supports seismic design requirements for Seismic Design Categories A, B & C. Seismic design Categories D, E & F are not supported at this time.

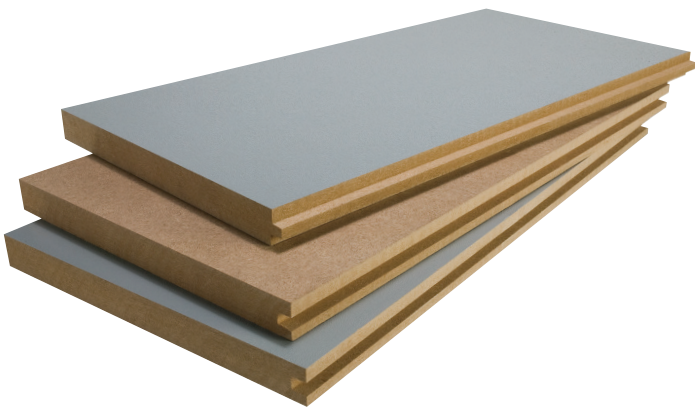
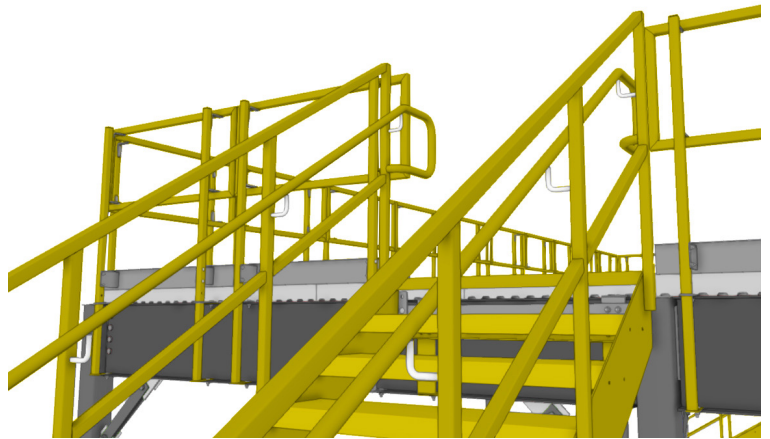


# Butler Express Mezz™ System



## Integrated Stairs and Railing

- Pre-punched perimeter beams for rail and stair attachment
- Railing and stair attachment is modular and interchangeable
- Railing sections are 4-feet wide (top rail, mid-rail, kick plate)
- Removable rail option
- 8-foot dual-opening swing gate option
- Stair options include OSHA or IBC designs



## Flooring Options

- Four ResinDek Panel options with up to 2,800 lb pallet jack load rating
- $\frac{3}{4}$ " board option available
- Concrete option
- A Butler Builder can help you make the best flooring choice for your project



# Experience the Butler® Difference.

**Butler Builders**—offering single-source responsibility and complete construction services. Find your local Butler Builder® at [www.butlerbuilder.com](http://www.butlerbuilder.com).

**High-performance products**—such as acrylic-coated galvanized C/Z purlins and girts, and structural and wall systems that integrate easily with conventional building materials.

**Butler-Cote™ finish**—only Butler offers this superior full-strength Kynar 500® or Hylar 5000® Fluoropolymer finish system as the standard exterior finish on all painted panels and trim.



Butler Manufacturing  
Kansas City, MO  
816-968-3000

[www.butlermfg.com](http://www.butlermfg.com)

Butler® building products are constantly being improved; therefore, the information contained herein is subject to change without notice. Before finalizing project details, contact your nearest Butler Builder® or Butler Manufacturing™ for the latest information.

Kynar 500® is a registered trademark of Arkema. Hylar 5000® is a registered trademark of Solvay Solexis. The ENERGY STAR name and the ENERGY STAR symbol are registered trademarks of the United States Environmental Protection Agency. The USGBC logo is a registered trademark owned by the U.S. Green Building Council and is used by permission.

© 2020 BlueScope Buildings North America, Inc. All rights reserved. Butler Manufacturing™ is a division of BlueScope Buildings North America, Inc. Find your independent Butler Builder® at [www.butlerbuilder.com](http://www.butlerbuilder.com).  
Form No. 6576 6/20