



# Butler Mod 36 Liner Panel

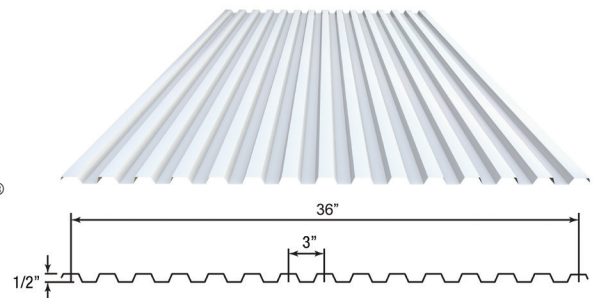
Dual purpose interior panel



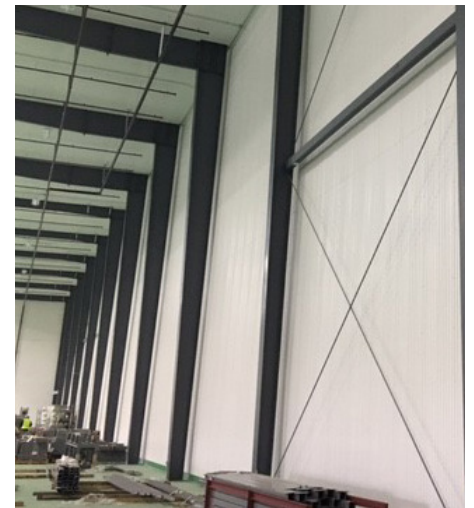
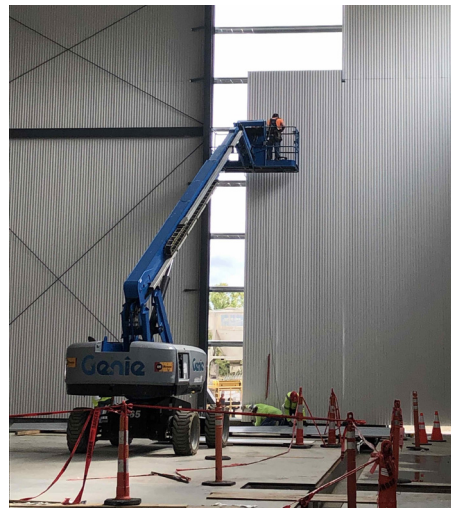
The MOD-36 liner is a metal panel attached to the inside of the wall girts to create an interior wall and to protect the blanket insulation. The liner can be partial height based on girt spacing or extend to the full height of the wall.

## Features

- 28 & 22 gauge available in polyester white or Galvalume® finish up to 41'-8"
- Available in 24 and 26 gauges in Butler® standard Butlerib® wall color offerings



MOD-36 Liner Panel

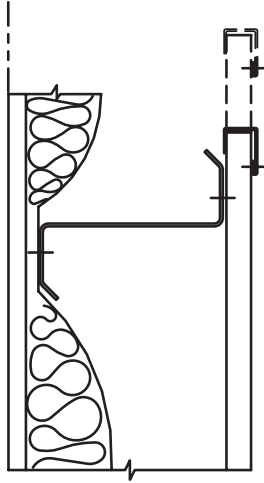


## Panel Section Properties (per foot width of panel)

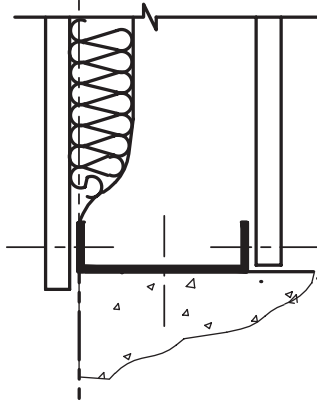
Panel Gage	Design Thickness (in)	Height (in)	Weight (psf)	F <sub>y</sub> (ksi)	F <sub>u</sub> (ksi)	Compression on Outside (top)		Compression on Inside (bottom)	
						S <sub>x</sub> (in <sup>3</sup> )	I (in <sup>4</sup> )	S <sub>x</sub> (in <sup>3</sup> )	I (in <sup>4</sup> )
28 Ga	0.014	0.504	0.73	80	82	0.0241	0.0093	0.0256	0.0093
26 Ga	0.018	0.508	0.92	50	65	0.0363	0.0123	0.0381	0.0123
24 Ga	0.023	0.513	1.17	50	65	0.052	0.0167	0.0538	0.0167
22 Ga	0.029	0.519	1.44	50	65	0.0725	0.0200	0.0738	0.0200

# Mod-36 Liner Panel

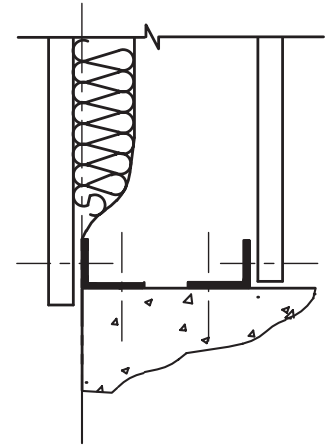
Top Trim Attachment



Base Channel Attachment



Base Angle Attachment



## The Butler Difference

Butler Builders provide complete construction services with single-source responsibility

- Reputable professionals with extensive knowledge of local building codes

Maximize your building's performance with a complete Butler® system solution

- Innovative structural, wall and roof systems
- Precision-engineered for seamless integration



## Key Benefits

- Durable, protects blanket insulation from damage, washable, finished look or appearance.
- Is available in various gage sizes to accommodate most building projects.
- Comes in Butler's standard Butlerib wall color offerings.
- Essentially maintenance-free and long-lasting.
- Does not support mold growth, resists rust and decay better than other materials.
- Fire resistant
- Made of recycled materials and can be recycled again at the end of its useful life.

Butler Manufacturing  
Kansas City, MO  
816-968-3000

[www.butlermfg.com](http://www.butlermfg.com)

Butler® building products are constantly being improved; therefore, the information contained herein is subject to change without notice. Before finalizing project details, contact your nearest Butler Builder® or Butler Manufacturing™ for the latest information. Galvalume is a registered trademark of BIEC International, Inc. USGBC logo is a registered trademark owned by the U.S. Green Building Council and is used by permission. IAS is a subsidiary company of the International Code Council.

© 2020 BlueScope Buildings North America, Inc. All rights reserved. Butler Manufacturing™ is a division of BlueScope Buildings North America, Inc. Find your independent Butler Builder® at [www.butlerbuilder.com](http://www.butlerbuilder.com). Form No.6606 12/20