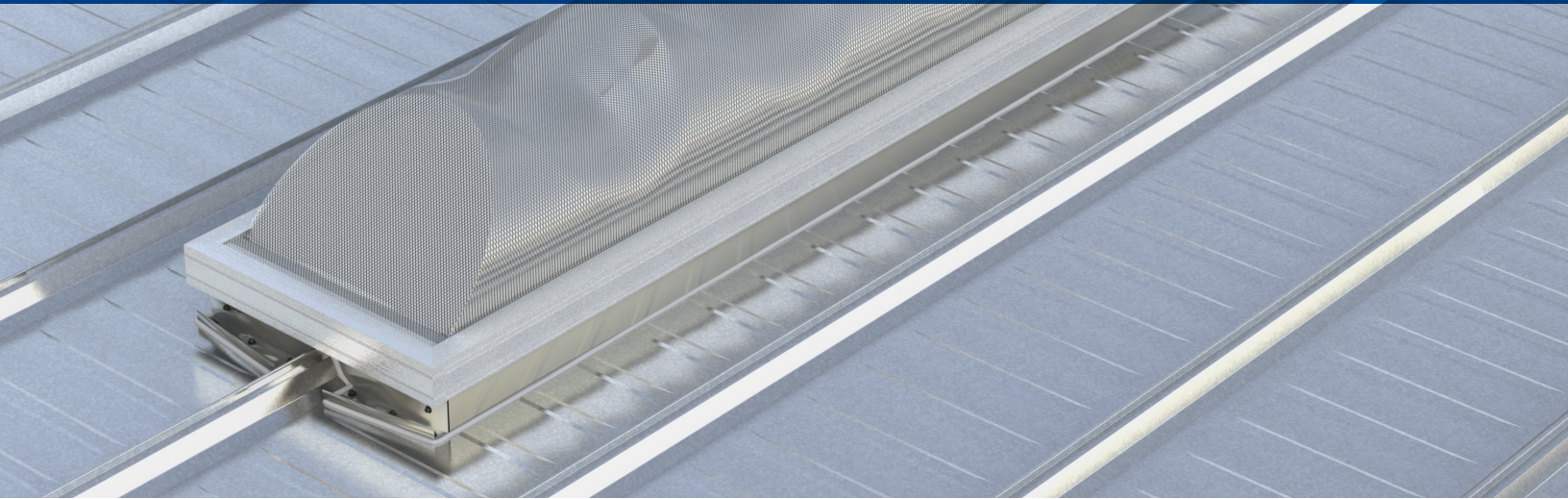




SunLite Strip® Daylighting System

A simple, superior way to reduce operating costs



Save money, improve your building's aesthetics, increase employee productivity, and enhance customer satisfaction by introducing natural daylight into any Butler® building featuring the MR-24® roof system.

Reduce Electric Lighting Expense up to 70%

Introducing natural daylight into a building benefits everyone from customers and employees, to yes, even accountants. In most cases, lighting costs can exceed the expense for heating and air conditioning a building. Independent studies have shown that daylighting alone increased same-store sales by 40% for one major national retailer. Building owners have proven that when combined with lighting controls they can reduce these costs up to 70% by harvesting the free, natural light provided by Mother Nature.

Design Assurance

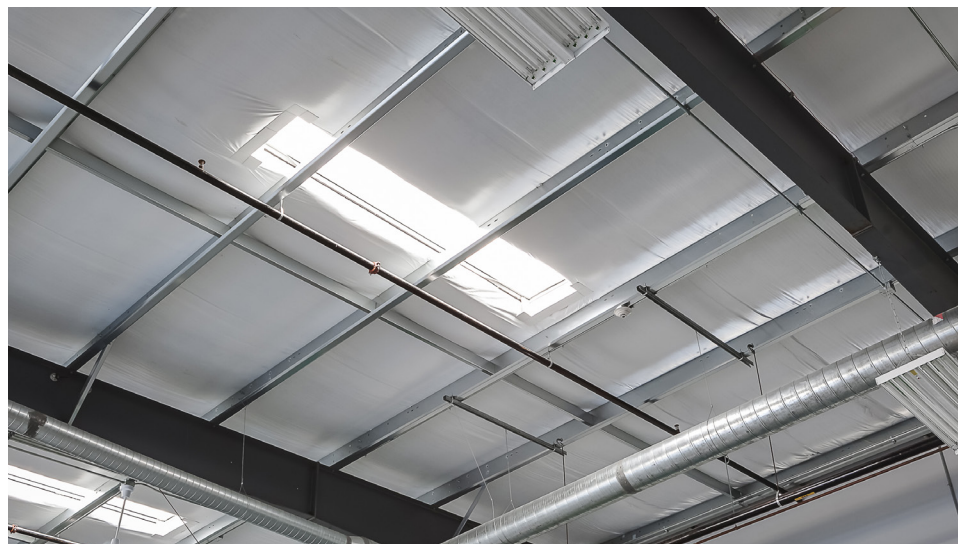
The SunLite Strip Daylighting System design complements the monolithic, expanding-and-contracting, industry-leading performance features of the MR-24 roof system. The system is not pinned to the structure, so it's free to float with roof movement. The daylighting system also requires 85% fewer fasteners in the drainage plane and can be installed in 1/3 the time of traditional industry standard skylights.

Ideal for Retrofit Applications

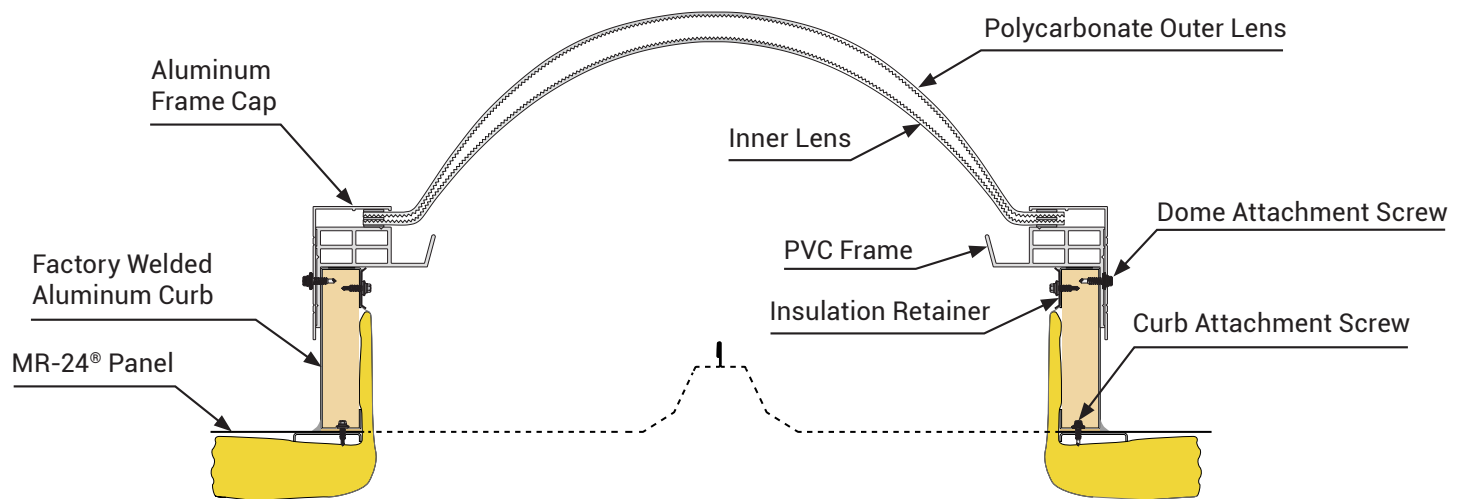
Save operating costs by reducing your lighting load during peak hours of operation. Whether you're applying for incentives at the federal level in the form of tax deductions and accelerated depreciation schedules, grants at the state level or rebates from your local utility provider, we'll provide the data you need to design lighting controls—and then provide evidence that you meet the requirements for these lucrative savings.

The Power of Prismatics

The technology of polycarbonate prismatic acrylic skylights is like passing ordinary sunlight through 4,000 mirrors per square foot, providing 100% diffused light, even in overcast conditions, without the glare and hotspots of traditional fiberglass skylights. The SunLite Strip system is powered by the patented dome design. This unique dome design pulls in more light later in the day than any skylight on the market, and it boasts a VLT (visible light transmittance) of .78 on double-domes and .64 on triple-domes.



SunLite Strip® Daylighting System



Butler Offers You More

Butler Builders provide complete construction services with single-source responsibility

- Reputable professionals with extensive knowledge of local building codes

Maximize your building's performance with a complete Butler® system solution

- Innovative structural, wall and roof systems
- Precision-engineered for seamless integration



Key Benefits

- **Ease of installation** - The curb arrives fully assembled to reduce labor hours.
- **High quality design** - It is made from aluminum for ultimate corrosion resistance and longevity. The design does not divert water through panel corrugation, nearly eliminating the potential for leaks. The curb creates an attractive, high-quality transition detail between your roof insulation and the daylighting opening.
- **Superior performance** - The skylights provide high daylight illumination with visible light transmission up to 72% and are available in standard double-dome and triple-dome glazing.
- **Safety** - Optional, below-dome safety screens are available to provide fall protection for workers on the roof top. Burglar bars are also available.
- **Reduce Energy Consumption** - Electrical lighting consumption reduced by up to 70%.
- **Super Durable** - Polycarbonate prismatic outer lens is 30 times stronger and more flexible than acrylic domes and meets Class 4 hail rating.
- **Better Performance** - Introduces up to three times the amount of light earlier and later in the day than translucent panels.

Butler Manufacturing
Kansas City, MO
816-968-3000

www.butlermfg.com

Butler® building products are constantly being improved; therefore, the information contained herein is subject to change without notice. Before finalizing project details, contact your nearest Butler Builder® or Butler Manufacturing™ for the latest information. Galvalume is a registered trademark of BIEC International, Inc. USGBC logo is a registered trademark owned by the U.S. Green Building Council and is used by permission. IAS is a subsidiary company of the International Code Council.

© 2020 BlueScope Buildings North America, Inc. All rights reserved. Butler Manufacturing™ is a division of BlueScope Buildings North America, Inc. Find your independent Butler Builder® at www.butlerbuilder.com. Form No.5492 09/20

