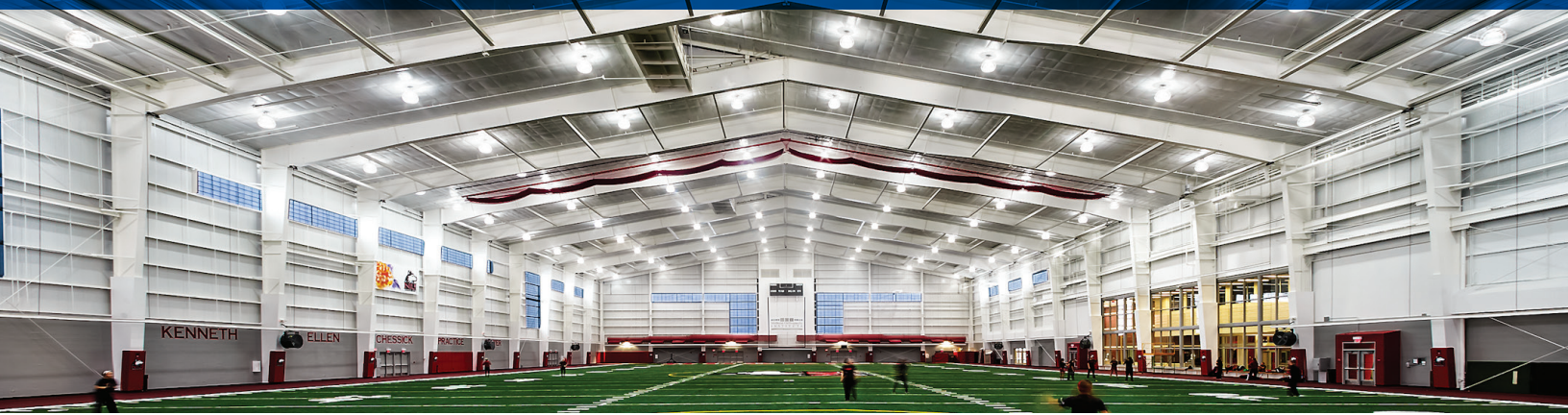




Widespan™ Structural System

Maximize the functionality and productivity of your building's interior space



A structural system should enhance a building's functionality, not stand in its way. That's the principle upon which the Widespan™ structural system is designed. This versatile rigid frame system assures maximum use of interior space, while also providing virtually unlimited flexibility with regard to building width, height, roof slope, and exterior finish.

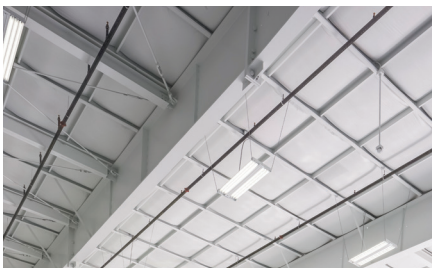
Choose the Widespan structural system to create functional uninterrupted space in applications such as warehouses, offices, retail stores, and recreational centers.

Assure Unmatched Functionality

The Widespan structural system is available in three different framing options. Each is designed to complement and enhance your building's intended use. You can also specify straight or tapered columns to meet your budget and performance parameters.

LRF Framing System

The LRF framing system provides a variable roof slope as low as 1/4:12 to 4:12 for a contemporary exterior profile. Buildings can be specified in widths from 30 feet to virtually unlimited lengths, in 6-inch increments, for large clearspan interiors.



MRF Framing System

The MRF framing system is specifically designed for wide buildings using a minimum of interior columns. MRF frame buildings are available in widths from 60 feet to 300 feet, with interior modules from 20 feet to 80 feet.

WX Framing System

The WX framing system provides additional space for expansions, enabling greater design freedom now or in the future. WX frames are available in widths up to 60 feet.

Save Time And Money In Construction

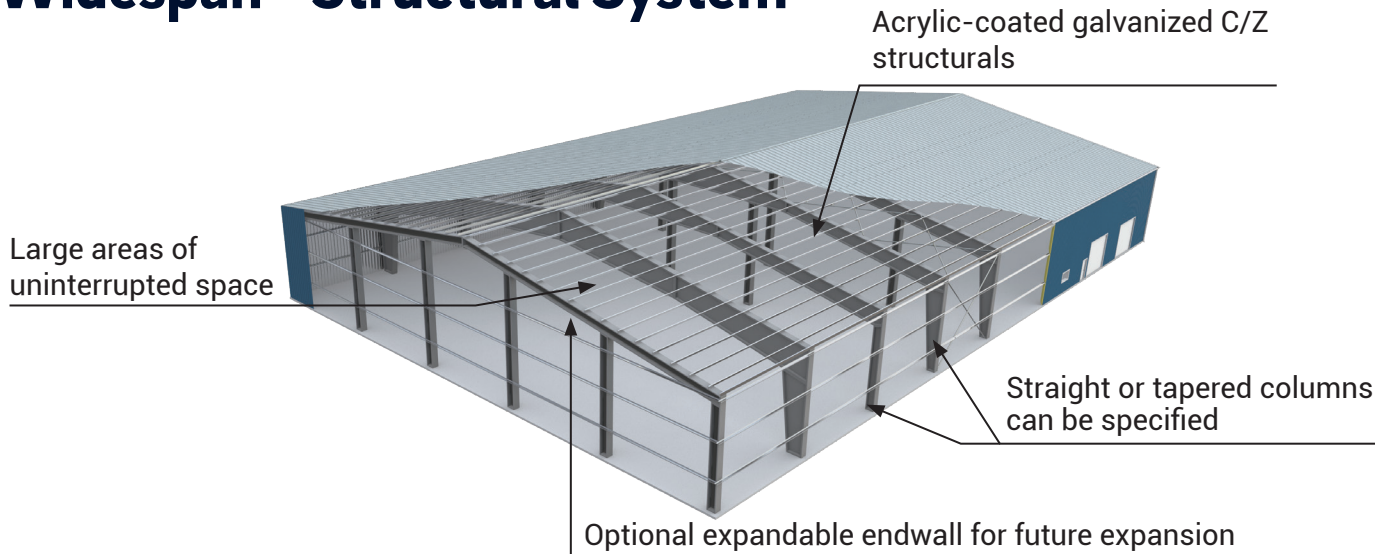
With a systems construction solution from Butler, every Butler component is engineered and manufactured to assemble together. So the entire building—from the structural system to the wall and roof systems—can be built with greater speed and precision than is generally possible with conventional construction methods.

Enhance Protection And Durability

The Widespan structural system features acrylic-coated galvanized C/Z structural members for added durability and reduced maintenance costs over the life of the building. This value-added feature comes standard from Butler at no additional cost.



Widespan™ Structural System



The Butler Difference

Butler Builders provide complete construction services with single-source responsibility

- Reputable professionals with extensive knowledge of local building codes

Maximize your building's performance with a complete Butler® system solution

- Innovative structural, wall and roof systems
- Precision-engineered for seamless integration



Key Benefits

- Extensive Widespan framing options maximize use of interior space
- LRF framing system accommodates low-slope roof for contemporary beauty
- MRF framing system reduces interior columns to create uninterrupted space
- WX framing system allows expansions for greater design freedom
- Butler engineering adds precision and speed for cost savings in design and construction
- Acrylic-coated galvanized C/Z structurals come standard for added durability

Butler Manufacturing
Kansas City, MO
816-968-3000

www.butlermfg.com

Butler® building products are constantly being improved; therefore, the information contained herein is subject to change without notice. Before finalizing project details, contact your nearest Butler Builder® or Butler Manufacturing™ for the latest information. Kynar 500® is a registered trademark of Arkema. Hylar 5000® is a registered trademark of Solvay Solexis. IAS is a subsidiary company of the International Code Council. USGBC is registered trademark owned by the U.S. Green Building Council and is used by permission.

©2021 BlueScope Buildings North America, Inc. All rights reserved. Butler Manufacturing™ is a division of BlueScope Buildings North America, Inc. Find your independent Butler Builder® at www.butlermfg.com.

Form No. 3530 2/21